



[2025]

# Traffic Live EXchange - TLEX<sup>®</sup>

The proven foundation for connected mobility  
and digital infrastructure

# Unlock the Power of Connected Mobility with TLEX®

The Traffic Live Exchange (TLEX®) platform: the proven data sharing layer that connects road infrastructure, road users, use-case applications, AI models and data exchange networks.

## Improving Traffic Flow and Road Safety

Elevate traffic management and safety with TLEX® – the modular, standards-based platform powering connected mobility and digital infrastructure.

- **Seamless data exchange:** Real-time, two-way communication between roadside systems, service providers, automakers, and road users.
- **Built for scale:** Interoperable, scalable, and privacy-by-design integrates effortlessly with existing infrastructure.
- **Plug-and-play use cases:** Access a growing library of ready-made support packages, or create your own.
- **Smarter decisions, safer roads:** Empower authorities, industry, and partners to build smoother traffic and more responsive mobility networks.

## Why TLEX Stands Out Proven at Scale

From pilots to national rollouts, TLEX powers billions of secure, real-time exchanges every day.

### Plug-and-Play Interoperability

Out-of-the-box integration, built on standards, with a thriving partner ecosystem.

### Most Complete Functionality

The market's most comprehensive mobility platform – all in one solution.

### Future-Proof

Always standards-compliant, continuously updated, ready for what's next.

## How It Works

TLEX® connects the entire mobility ecosystem through dedicated docks and engines:

### The Docks

- **Field Equipment Dock** – connects roadside systems such as traffic lights, sensors, cameras, and barriers.
- **Connected Mobility Dock** – links vehicles and road users via apps, OEMs, fleets, and service providers.
- **Application Dock** – integrates with functional applications like traffic management, digital twins, micro-mobility, and AI models.
- **Federation Dock** – connects with other data exchange networks to enable cross-regional and multi-jurisdiction solutions.

### The Engines

Behind these docks, TLEX comes with a full set of engines that handle everything from data transformation and exchange to verification, policy enforcement, and shared services. These engines are built in and work together automatically.

This makes TLEX a plug-and-play platform: you don't need to worry about the mechanics.

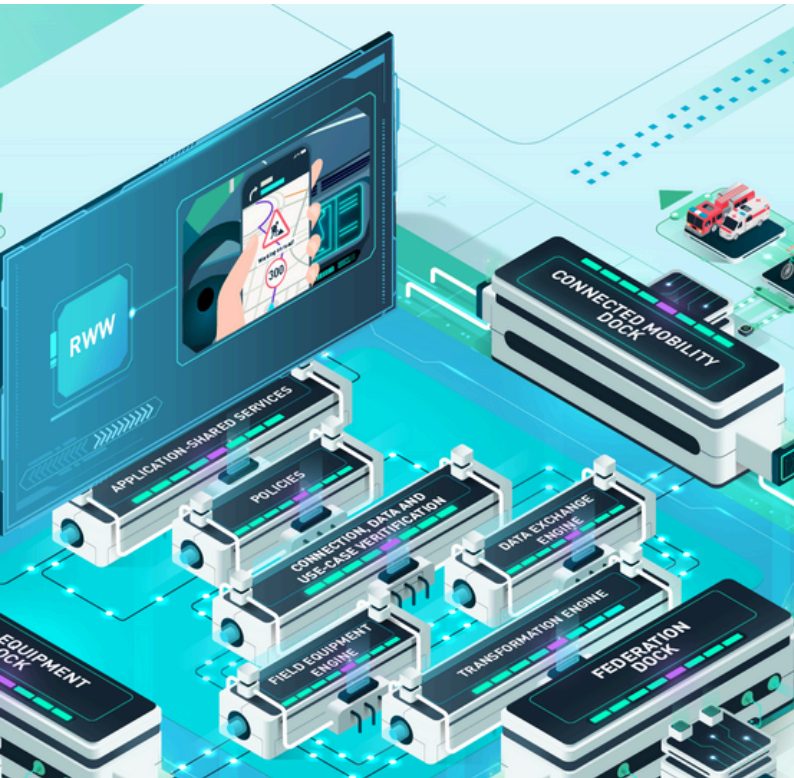
Use Cases Support Packages: Start Small, Scale Big

When you activate a use-case support package, the relevant parts in the engines switch on in the right configuration – ensuring that data flows smoothly, securely, and with all the quality checks in place.

The TLEX® architecture supports integration with virtually every mobility use case. Highly scalable and flexible, you can start with one and build from there – seamlessly expanding your digital infrastructure step by step. Just select the use cases you need, and TLEX takes care of the rest.

Most Common Implementations

USE-CASE	WHAT IT DOES	ROI	KEY BENEFITS
(EVA) Emergency Vehicle Alerts	Warns drivers of approaching ambulance	Year 1 ROI : ~340% Year 2 ROI : ~730%	Prevents crashes, saves lives, faster response
Priority/ Pre-emption	Priority for selected vehicles (buses, ambulances, freight, bicycles, etc.)	>200% ROI	Saves lives, cuts fuel costs, boosts punctuality
(RWW) Road Works Warning	Sends digital alerts to drivers approaching work zones	Year 1 ROI : ~243% Year 2 ROI : ~413%	Reduces crashes, avoids delays, increases worker safety



Monotch’s Platform Empowers Road Authorities and Road Users

Proudly powering connections since 2016, TLEX® boasts a track record of zero security breaches and 100% uptime. Currently facilitating nearly 2 billion daily message exchanges, our network spans across seven countries, connecting numerous authorities and continuing to grow.

0 security breaches

1.9 billion message/day

12,800 traffic lights

100% TLEX up-time

TLEX®–Where Mobility Meets Intelligence

Transform your digital infrastructure into a dynamic, interconnected ecosystem. Drive safer, smarter, and more sustainable mobility with TLEX, the proven choice of forward-looking authorities and industry innovators.





[info@monotch.com](mailto:info@monotch.com)  
[www.monotch.com](http://www.monotch.com)



Contact



Demo



What TLEX does



How TLEX does it